

055 / 080 COMPACT CRANE PACKAGES



QuickLIFT®
COMPACT CRANES



Without compromise:

The ultra-light, compact Quicklift 055 and 080 cranes have been designed to be an efficient and safe replacement for manual lifting, while boosting productivity through the capacity to lift up to 580kg and 700kg respectively!

SAFER with load-hold valve protection and operated by radio remote so you can operate at a distance, out of harms way

SMARTER the cost of down-time from back injury often exceeds the cost of a compact crane

STRONG 580kg or 700kg max lift, ultra-light crane weight

COMPACT only takes up a 310mm x 457mm deck footprint

COMPLETE KIT with base plate, stabiliser and power pack with radio remote control

HYDRAULIC slew, lift and extension

VERSATILITY Quicklift can be utilised in any industry

HARD WEARING Teflon pads fitted to hydraulic extensions to provide less friction on boom extensions, giving less wear and greater life span on the crane structure.

NEW ZEALAND designed and tested, backed by a 3 year warranty with fitting agents nationwide

What's included:

- Fully hydraulic crane, slew and lift
- 1.65m hydraulic / 2.40m manual extension (055)
- 2.10m hydraulic / 2.90m manual extension (080)
- Base plate, leg socket and bolt down kit
- Fully enclosed power pack, fitted with isolator switch (choice of 12 or 24 volt)
- Radio remote control on all functions
- Overload relief on lifting cylinder
- Oil tank



THE ULTIMATE UTILITY UPGRADE

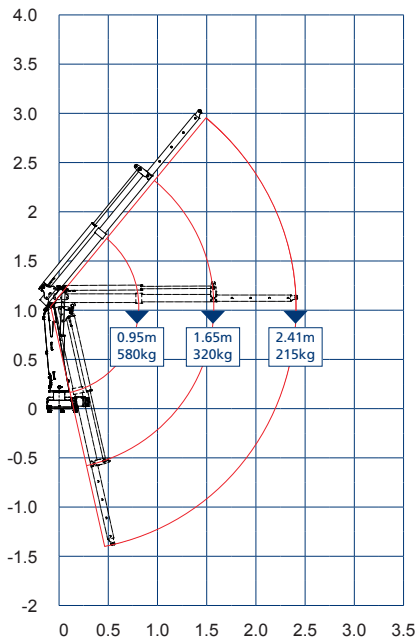
055 / 080 COMPACT CRANES



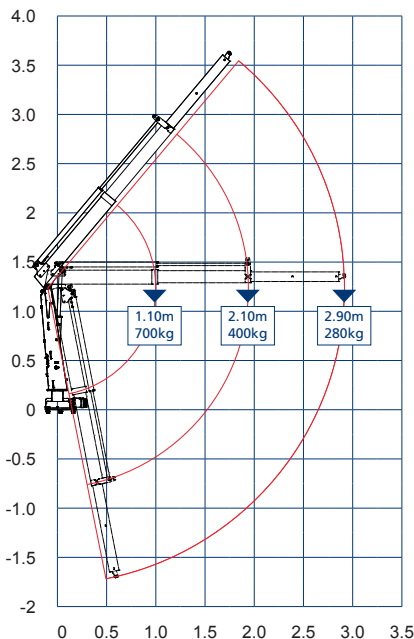
SPECIFICATIONS

| Quicklift model | 055 | 080 |
|-------------------------|----------|----------|
| Size T/M | 0.55 | 0.77 |
| Max lift | 580kg | 700kg |
| Distance at max lift | 0.95m | 1.10m |
| Max hyd reach | 1.65m | 2.10m |
| Weight at max hyd reach | 320kg | 400kg |
| Max reach | 2.41m | 2.90m |
| Weight at max reach | 215kg | 280kg |
| Standard crane weight | 115kg | 124kg |
| Base frame weight | 35kg | 35kg |
| Stowed crane height | 1.08m | 1.28m |
| Stowed crane length | 0.46m | 0.49m |
| Stowed crane width | 0.31m | 0.31m |
| Radio controlled | Included | Included |
| Mounting spaces | 0.31m | 0.31m |

Quicklift 055 range diagram

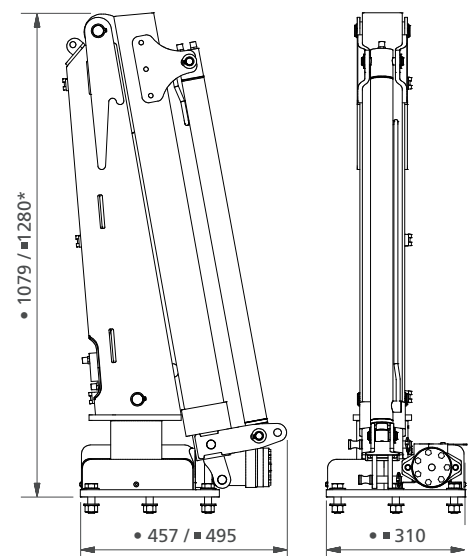


Quicklift 080 range diagram



Crane dimensions (mm):

Key: • 055 / ■ 080



*Note: 080 crane height includes optional spacer (not shown) which allows the crane to be stored fully stowed. 080 Crane height excluding spacer is 1092mm with an increased width of 930mm.

Quicklift Australia Distributor: Healy Group Pty Ltd
 Contact us for sales, service & support | Ph +61(0)2 9525 5522
 Eml info@healygroup.com.au | www.healygroup.com.au
 4/12-14 Northumberland Rd, Caringbah, NSW 2229

